

DEAR CHILDREN SINCERELY

# GIRLS AT CHECKPOINT

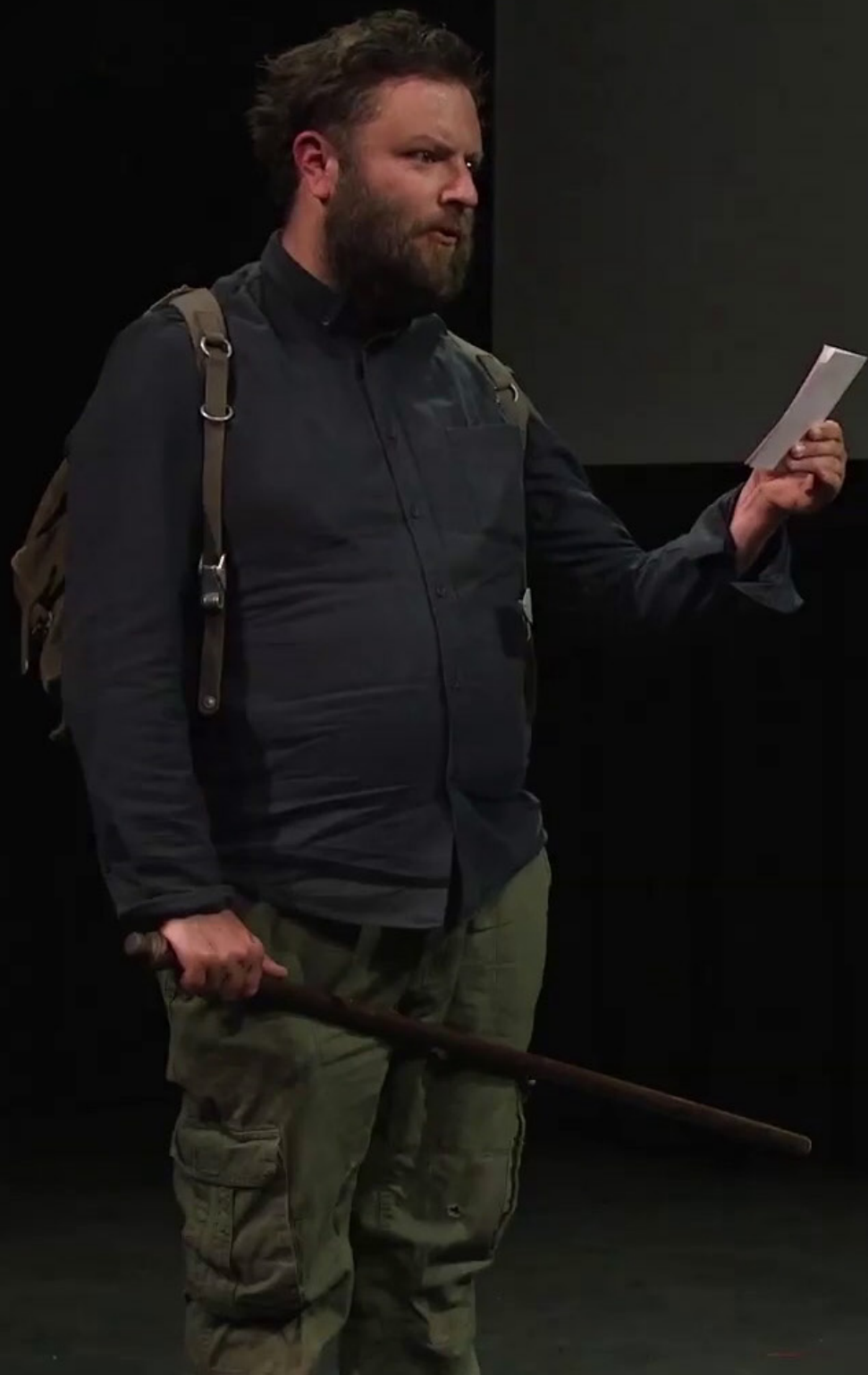
*Directed by* **Ruwanthie de Chikera**

## Production Design Document

*Produced by* **University of Essex**

*First performed at* **International Festival for Women Theatre Makers**  
*on* **27<sup>th</sup> June 2017, Mercury Theatre, Colchester, United Kingdom**

stages  
theatre  
group



## *Introduction*

'Girls at Checkpoints' is a 15 min research-based, devised theatre performance created within the wider DCS project. It was devised and performed at the '2017 Festival for Women Theatre Makers', event held at the Mercury Theatre in Colchester the UK. The performance was a product of a ten-day theatre residency held within the university of Essex. The production was created by the director and two main artists who acted in it.

## *Production Design*

There was no overall production design in this production as it was part of a wider festival. The performance was in a black box style theatre.

## *Set Design*

This was a shared performance space at then end of a ten day workshop. There was also only a very limited set up and rehearsal time.

The set design for Girls at Checkpoints was minimalist – as the play moved between three stories and several different settings quite seamlessly.

The set comprised two black chairs – which were used to depict scenes at home and also scenes in a bus. The chairs were placed on one side of the stage. This was a place of security. A box – placed on the other side of the stage represented the checkpoint. And this was the place of danger and violation. The characters moved between these two worlds.

## *Light design*

Costuming and wardrobe were minimalist. The actors had to rely on clothes and accessories they already had.

The two main actors played multiple roles - each played three characters. So the actors wore a black base costume and used two similar patterned shawls – draped in different ways – to depict the several characters they played.

The soldier character wore a khaki base to insinuate the military uniform.

## *Costumes*

The props were minimal but significant. The soldier used a baton and carried a Kaki bag. The girls each carried a bag. The most significant prop was the packet of rice wrapped up in newspaper. This prop was used in a marked way in the performance as it was directly connected to the rape and murder of one of the characters.

## *Makeup*

Make up was very naturalistic. There was no character make up at all.

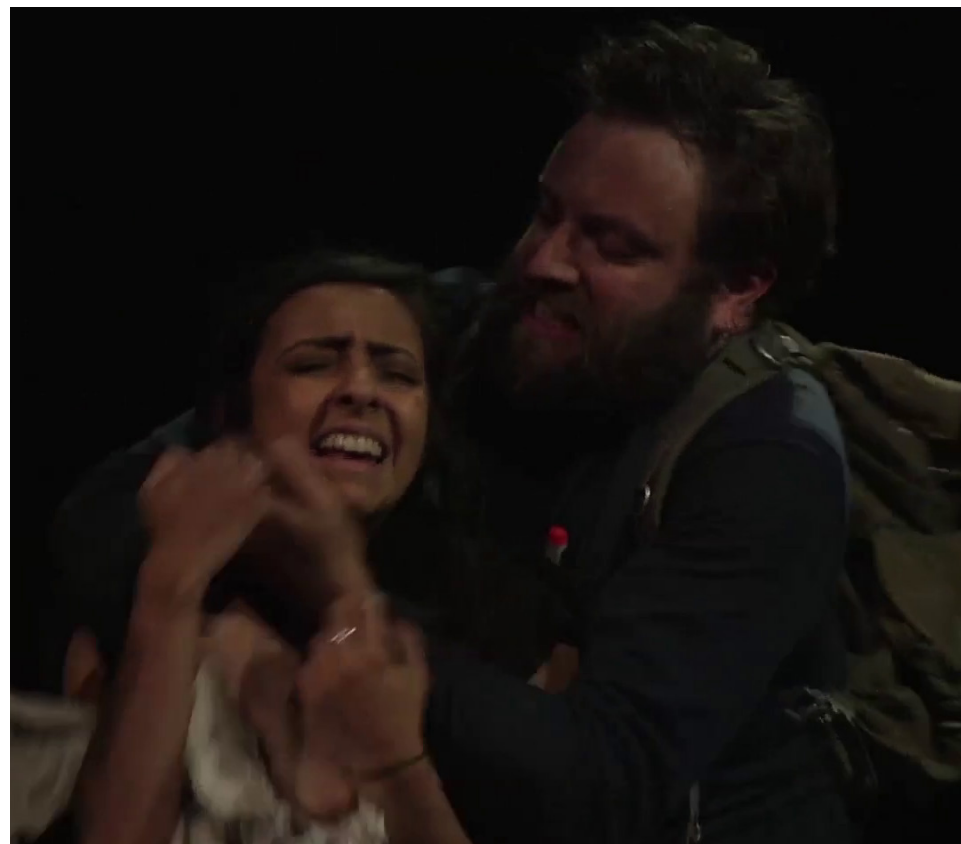
## *Gallery*



















## *Credits*

*Director* **Ruwanthie de Chickera**

*Writer* **Ruwanthie de Chickera**

*Producer* **University of Essex**

### *Cast*

**Piumi Wijesundara**

**Ashling Edward O'Shea**

**Ewoot D'Hooore**